



Flemish Departement of Work & Social Economy

Oracle Spatial Dag

25/11/2010

Agenda

- ➔ WSE
- ➔ Why BI?
- ➔ Why OBI?
- ➔ Oracle Products Used
- ➔ Highlights (Live Demo)
- ➔ Internal vs External BI
- ➔ Facts & Figures
- ➔ Q&A

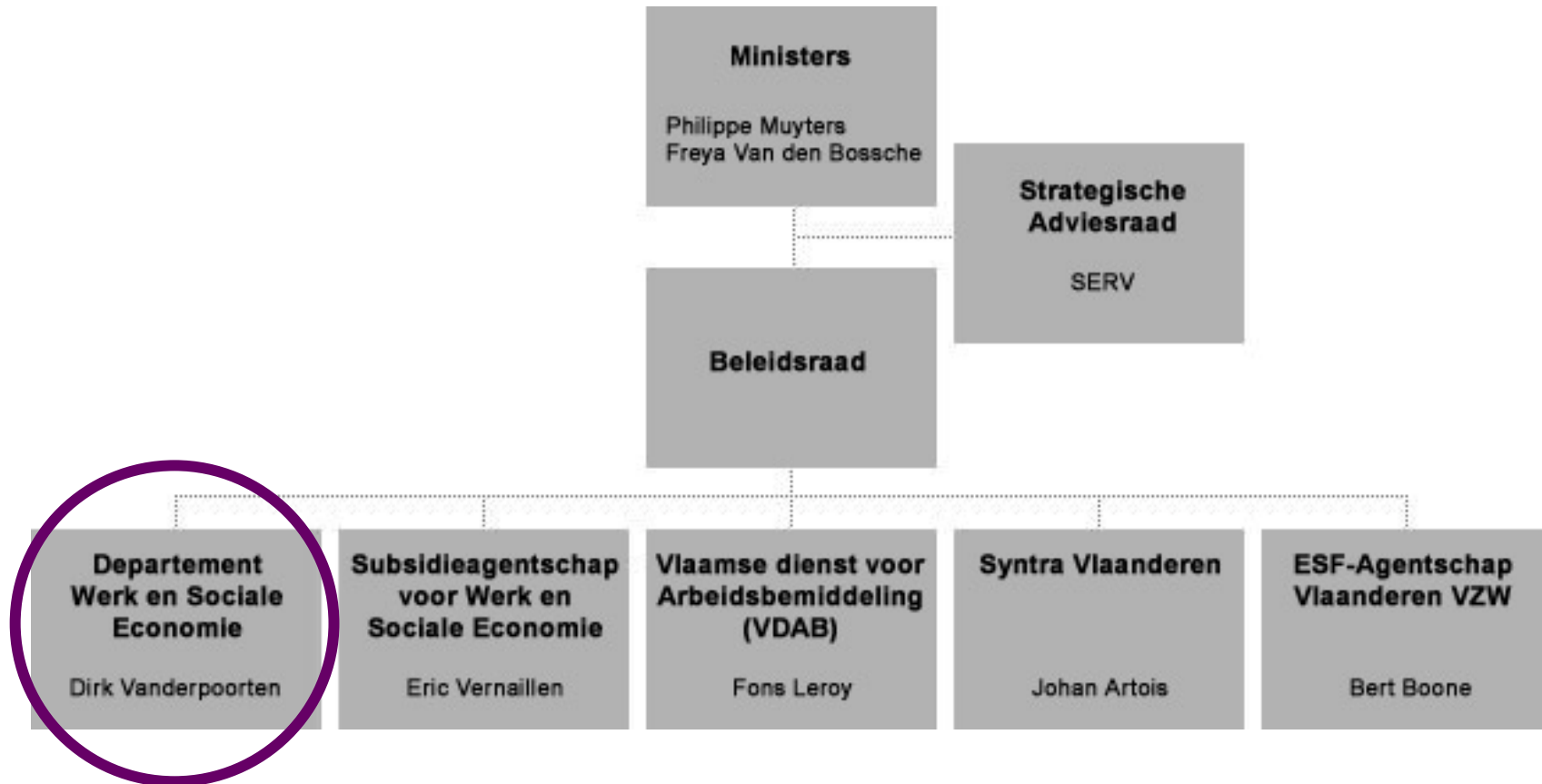


Agenda

- WSE
- Why BI?
- Why OBI?
- Oracle Products Used
- Highlights (Live Demo)
- Internal vs External BI
- Facts & Figures
- Q&A



Departement of Work & Social Economy



Departement of Work & Social Economy



➔ Small flexible organisation of about 100 high educated (>90% university degree) people

➔ Vision

“As a coördination centre for labour market policy, with a big knowledge base and network, we inspire and give pioneering answers to todays and future challenges on the labour market”

➔ working areas

- ➔ Policy making together with the Flemish ministers
- ➔ Policy evaluation
- ➔ Labour market monitoring
- ➔ Inspection of labour market measures



Agenda

→ WSE

→ Why BI?

→ Why OBI?

→ Oracle Products Used

→ Highlights (Live Demo)

→ Internal vs External BI

→ Facts & Figures

→ Q&A



Why BI?

- ➔ If you see our main working areas BI is not only an operational need but a strategic need to realise our goals
 - ➔ Policy making: analyzing trends and facts on the labour market to collect information for a better fit of measures and labour market policies
 - ➔ Policy evaluation: what are the effects of measures on by ex. Unemployment, death weight effects of measures, cost/benefits of measures,...
 - ➔ Labour market monitoring. Evolution (un)employment, demographic tendencies,.... →IVAR, Social Economy monitor, ...
 - ➔ Inspection: risk analysis,...



Agenda

- WSE
- Why BI?
- Why OBI?
- Oracle Products Used
- Highlights (Live Demo)
- Internal vs External BI
- Facts & Figures
- Q&A



Why OBI?

- ➔ Proof of concept with 2 products: OBI and other big vendor
- ➔ Different reasons why OBI was better for us
 - ➔ Functional
 - ➔ easy to use for different users internal and external
 - ➔ easy for building own reports without big technical skills (only some commonsense)
 - ➔ Technical
 - ➔ integrated with the Oracle stack we use for application development (SOA-suite, Oracle Service Bus,....)
 - ➔ easy integration in our applications (one-click reporting)
 - ➔ easy integration in our portal
 - ➔ One remark: rather expensive license policy for external users

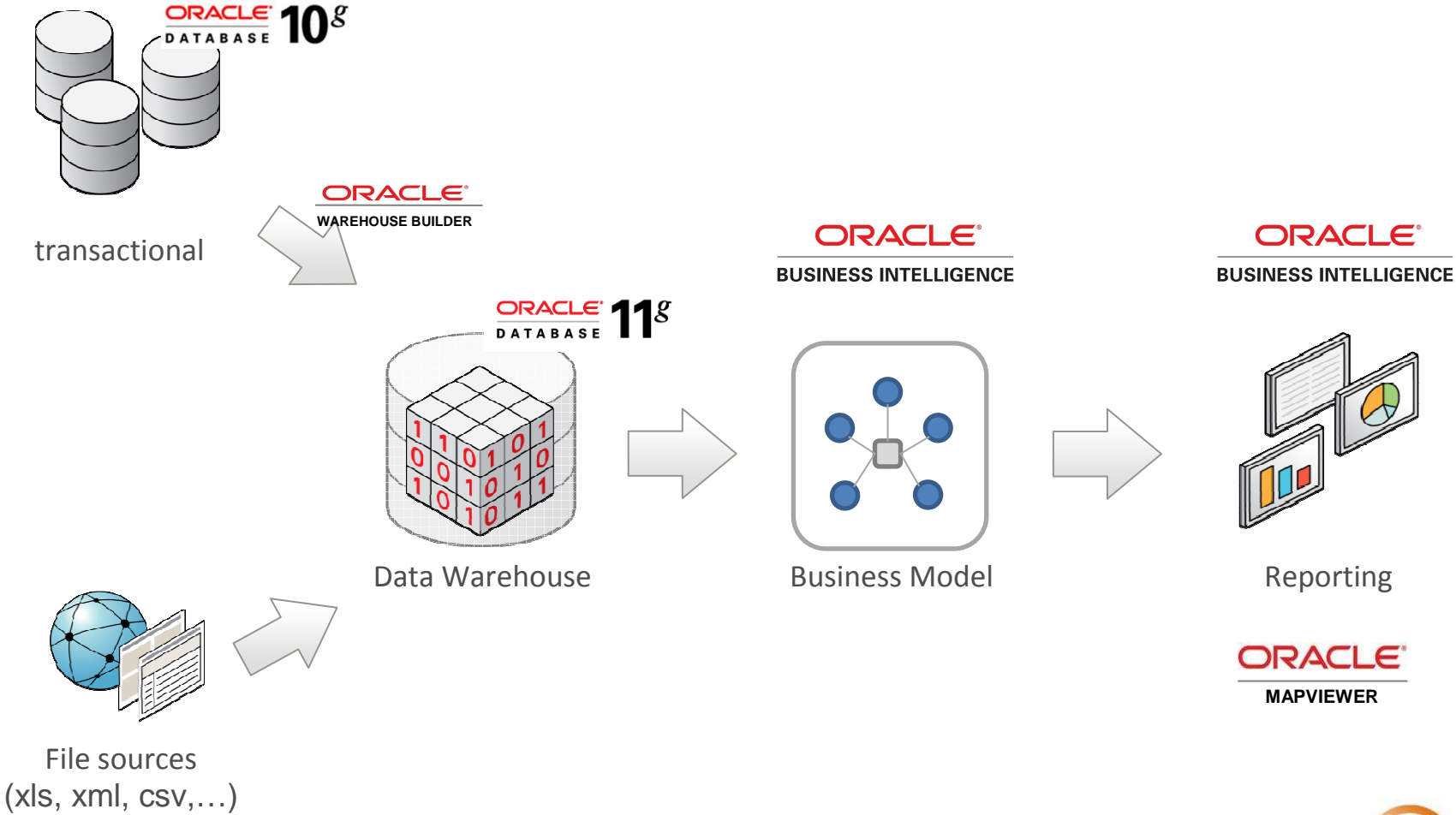


Agenda

- WSE
- Why BI?
- Why OBI?
- Oracle Products Used
- Highlights (Live Demo)
- Internal vs External BI
- Facts & Figures
- Q&A



Oracle Products Used



Agenda

- ➔ WSE
- ➔ Why BI?
- ➔ Why OBI?
- ➔ Oracle Products Used
- ➔ Highlights (Live Demo)
- ➔ Internal vs External BI
- ➔ Facts & Figures
- ➔ Q&A



Highlights

- ➔ Maps (www.werk.be | [demo](#))
 - ➔ Regional analysis more effective
- ➔ Report + KPI Definitions ([demo](#))
 - ➔ Owned by the Key Users
 - ➔ Modifications without help of IT ([demo](#))
- ➔ Flexibility to the public user
 - ➔ Download to Excel, csv, Powerpoint, PDF
 - ➔ Creation of 'personalised' reports ([demo](#))
- ➔ Data load procedure
 - ➔ Via input files → controlled by the WSE Key Users independantly
 - ➔ Use Oracle BI to monitor loads

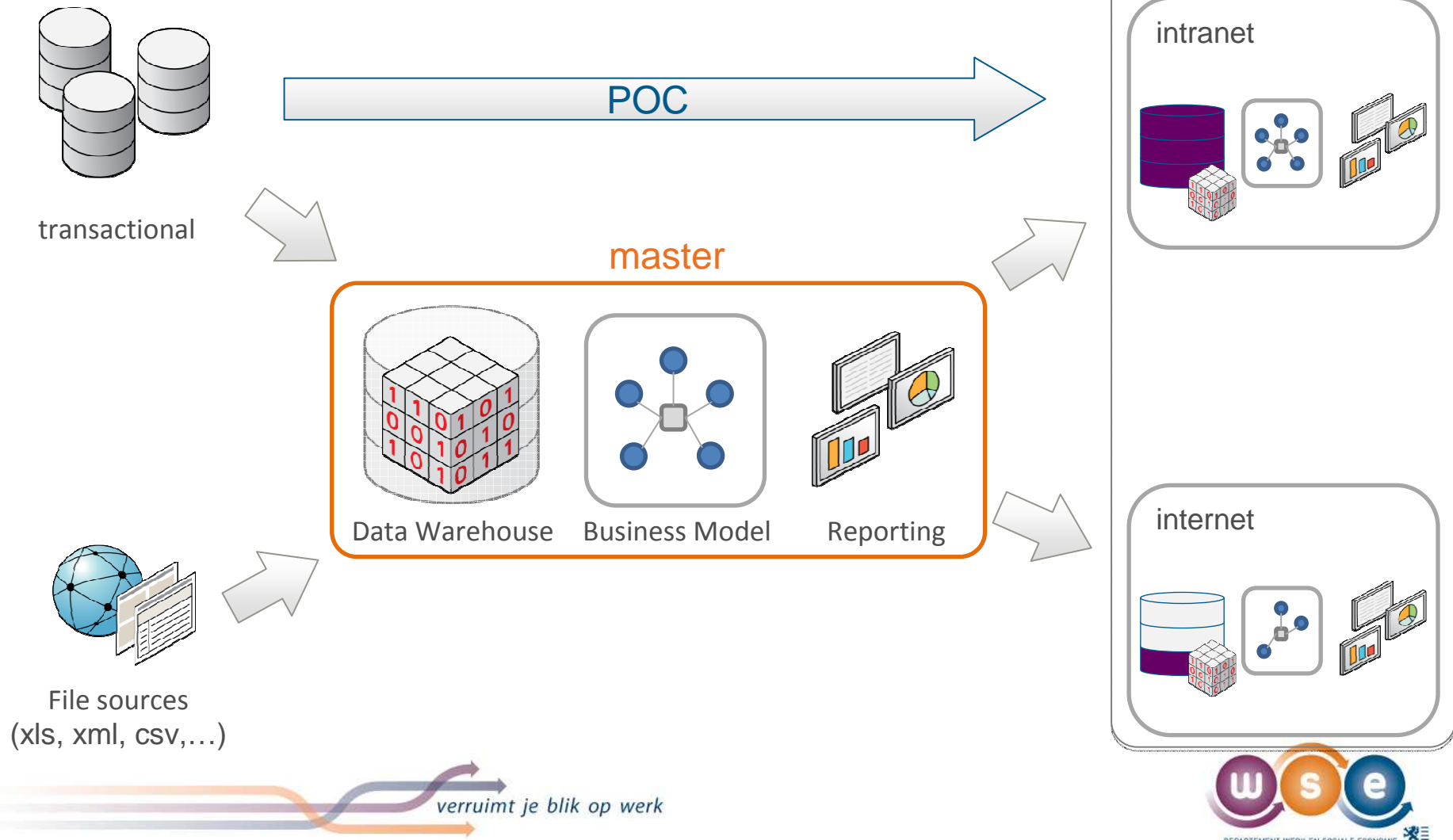


Agenda

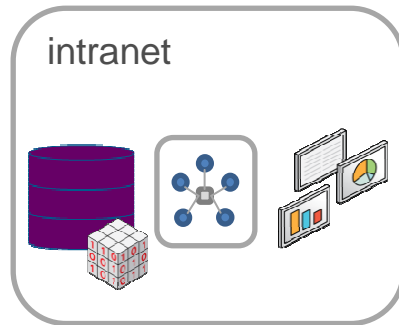
- ➔ WSE
- ➔ Why BI?
- ➔ Why OBI?
- ➔ Oracle Products Used
- ➔ Highlights (Live Demo)
- ➔ Internal vs External BI
- ➔ Facts & Figures
- ➔ Q&A



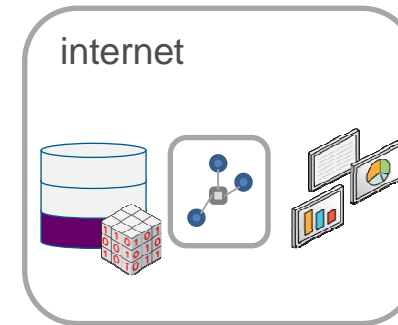
Internal vs External BI



Internal vs External BI



- # Subjects: Maximum
- Functionality: Maximum
- Dashboards
- Answers (AdHoc)
- Delivers (emails)
- Office (ppt + xls)
- BI Publisher (Pixel fine)
- Security:
- Data: Medium
- Reports: Medium



- # Subjects: Minimum
- Functionality: Minimum
- Dashboards
- Answers (AdHoc)
- Delivers (emails)
- Office (ppt + xls)
- BI Publisher (Pixel fine)
- Security:
- Data: Maximum
- Reports: Maximum

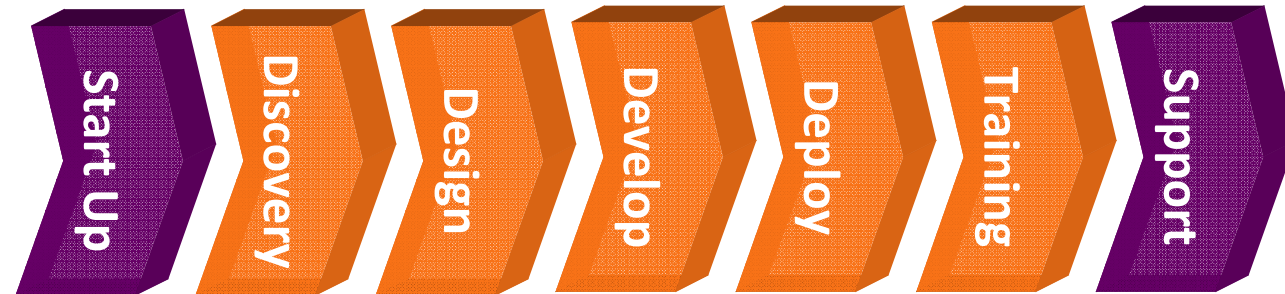
verruimt je blik op werk

Agenda

- ➔ WSE
- ➔ Why BI?
- ➔ Why OBI?
- ➔ Oracle Products Used
- ➔ Highlights (Live Demo)
- ➔ Internal vs External BI
- ➔ Facts & Figures
- ➔ Q&A



Fact & Figures



	10 stars								
iVAR	10 stars	1	5	11	73	10	2	5	107
Crisis									
Barometer	6 stars	1	2	3	30	5	1	5	47
Monitor SE	2 stars	1	1	1	10	3	1	2	19
Inspectie									
DPOL									



Agenda

- ➔ WSE
- ➔ Why BI?
- ➔ Why OBI?
- ➔ Oracle Products Used
- ➔ Highlights (Live Demo)
- ➔ Internal vs External BI
- ➔ Facts & Figures
- ➔ Q&A

